



HM TREASURY

Forecasts for the UK economy: a comparison of independent forecasts



Official versions of this document are printed on 100% recycled paper. When you have finished with it please recycle it again.

If using an electronic version of the document, please consider the environment and only print the pages which you need and recycle them when you have finished.

© Crown copyright 2011

You may re-use this information (not including logos) free of charge in any format or medium, under the terms of the Open Government Licence. To view this licence, visit <http://www.nationalarchives.gov.uk/doc/open-government-licence/> or write to the Information Policy Team, The National Archives, Kew, London TW9 4DU, or e-mail: psi@nationalarchives.gsi.gov.uk.

ISBN 978-1-84532-896-2
PU797

CONTENTS

	Page
Summary Page: Short-term forecasts	3
Table 1 - 2011: Growth in GDP and its components (% change)	4
Table 2 - 2011: Growth in prices and monetary indicators (% change)	5
Table 3 - 2011: Growth in other selected variables (% change)	6
Table 4 - 2012: Growth in GDP and its components (% change)	7
Table 5 - 2012: Growth in prices and monetary indicators (% change)	8
Table 6 - 2012: Growth in other selected variables (% change)	9
Average of independent forecasts for 2011; GDP growth, CPI and RPI inflation and claimant unemployment	10
Average of independent forecasts for 2011; Current account and PSNB (2011-12)	11
Average of independent forecasts for 2012; GDP growth, CPI and RPI inflation and claimant unemployment	12
Average of independent forecasts for 2012; Current account and PSNB (2012-13)	13
Dispersion around the independent consensus for 2011; GDP growth, CPI and RPI inflation made in the last 3 months	14
Dispersion around the independent consensus for 2011; Claimant unemployment, current account and PSNB (2011-12) made in last 3 months	15
Dispersion around the independent consensus for 2012; GDP growth, CPI and RPI inflation made in the last 3 months	16
Dispersion around the independent consensus for 2012; Claimant unemployment, current account and PSNB (2012-13) made in last 3 months	17
Annex 1: Forecasting institutions referred to in charts and tables	18
Annex 2: Data definitions	19
Annex 3: Notation used in tables	20
Annex 4: Organisation contact details	21

Please note that *Forecasts for the UK economy* is a summary of published material reflecting the views of the forecasting organisations themselves and does not in any way provide new information on the Treasury's own views. It contains only a selection of forecasters, which is subject to review. No significance should be attached to the inclusion or exclusion of any particular forecasting organisation. HM Treasury accepts no responsibility for the accuracy of material published in this comparison.

The averages and ranges in this document may be reproduced free of charge in any format or medium providing that it is reproduced accurately and not used in a misleading context. The data remain the copyright of those organisations providing it - permission to reproduce it must be sought from both HM Treasury and the providers of the original data.

Users should note that the Treasury crest (which incorporates the Royal Coat of Arms) may not be used or reproduced for any purpose without specific permission. Permission to use or reproduce the Treasury crest should be sought from HM Treasury.

***Forecasts for the UK economy* is compiled and coordinated by Mohammad Jamei. Please direct enquiries on the content of this issue to Mohammad Jamei (020 7270 5404, Mohammad.Jamei@hmtreasury.gsi.gov.uk).**

Please note that this version of the July Comparison incorporates a correction from the version first published online: the 2012 forecasts included for Capital Economics have been corrected from those originally published, as have the associated independent averages.

The next edition will be published on 17th August 2011. It will also be available on the Treasury's website: <http://www.hm-treasury.gov.uk/forecasts>.

PU797 ISBN 978-1-84532-896-2

FORECASTS FOR THE UK ECONOMY

A comparison of independent forecasts, July 2011

This edition of the comparison contains 27 new forecasts, all of which were received between July 1st and July 14th 2011. The tables below summarise the average and range of independent forecasts for 2011 and 2012 and show the average of this month's new forecasts.

Forecasts for 2011

	Independent ⁺				Average of new* forecasts
	Averages		July		
	July	June	Lowest	Highest	
GDP growth (per cent)	1.4	1.5	0.8	1.9	1.3
Inflation rate (Q4: per cent)					
- CPI	4.4	4.2	3.4	5.2	4.5
- RPI	5.2	5.1	4.3	5.9	5.2
Claimant unemployment (Q4: mn)	1.55	1.52	1.44	1.70	1.55
Current account (£bn)	-29.5	-24.9	-56.4	-2.3	-28.8
PSNB (2011-12: £bn)	124.8	122.8	110.0	157.3	125.1

Forecasts for 2012

	Independent ⁺				Average of new* forecasts
	Averages		July		
	July	June	Lowest	Highest	
GDP growth (per cent)	2.0	2.1	1.5	2.9	2.0
Inflation rate (Q4: per cent)					
- CPI	2.2	2.2	1.3	3.5	2.3
- RPI	3.4	3.4	2.3	5.3	3.4
Claimant unemployment (Q4: mn)	1.53	1.49	1.39	1.70	1.53
Current account (£bn)	-22.1	-20.7	-77.7	7.9	-22.9
PSNB (2012-13: £bn)	102.6	100.9	85.0	148.8	102.5

+ Independent averages, and the range of forecasts, are based on forecasts made in the last three months (July: 27 institutions, June: 4 institutions, May: 3 institutions).

*Calculated from new forecasts received for the comparison this month.

Note: All the averages given are the mean and exclude non-standard entries except for house-price inflation (see notation).

Table I - 201 I: Growth in GDP and its components (% change)

Forecasters and dates of forecasts		GDP	Private consumption	Government consumption	Fixed investment	Change in inventories contribution (% of GDP)	Domestic demand	Total exports	Total imports	Net trade contribution (% of GDP)	Output Gap (as % of potential GDP)
City forecasters											
Bank of America - Merrill Lynch	Jul *	1.3	-1.0	0.4	1.5	-0.1	-	-	-	1.6	-
Barclays Capital	Jul *	1.1	-0.8	0.8	-2.3	0.0	-0.6	7.8	1.2	1.7	-
Capital Economics	Jul *	1.0	-1.5	0.8	2.5	0.6	-0.1	8.0	3.5	1.1	-
Citigroup	Jul *	1.2	-0.4	0.8	-0.1	-0.2	-0.3	5.8	0.4	1.5	-
Commerzbank	Jul *	1.4	-0.3	0.9	2.8	0.0	0.4	5.6	1.8	1.0	-2.6
Daiwa Capital Markets	Jul *	0.8	-0.7	0.1	0.2	-0.5	-0.7	7.9	1.9	1.5	-3.2
Deutsche Bank	Apr	1.8	0.9	-0.4	4.1	0.3	1.6	5.1	4.6	-0.3	-
Goldman Sachs	Jul *	1.9	-0.3	0.7	3.7	-0.2	0.3	9.2	3.1	1.5	-3.2 k
HSBC	Jul *	1.2	-0.7	0.8	1.1	0.0	0.0	6.5	1.7	-	-
ING Financial Markets	Jul *	1.3	-0.2	0.4	0.4	0.2	0.2	9.8	5.4	1.1	-
J P Morgan	Jul *	1.1	-0.9	0.3	1.9	0.0	-	7.2	1.5	1.5	-
Lombard Street	Jul *	1.8	0.1	0.8	3.5	0.1	0.9	9.7	5.5	0.9	-3.2
Morgan Stanley	Jul *	1.2	-0.3	-0.2	-0.7	0.4	0.0	6.8	2.5	1.1	-
Nomura	Jul *	1.3	-0.3	0.4	0.7	0.0	0.1	7.7	2.5	1.3	-2.0
RBS Global Banking & Markets	Jul *	1.3	-0.3	0.7	0.6	-	0.0	7.4	2.4	1.3	-
Schroders Investment Management	Jul *	1.5	0.1	1.1	2.8	-0.1	0.6	8.1	4.3	0.9	-0.7
Scotia Capital	Jul *	1.2	-1.2	0.6	1.9	-0.1	-0.4	8.4	2.0	1.6	-2.0
Societe Generale	Jul *	1.5	-0.5	0.9	1.6	0.3	0.5	9.6	5.3	1.0	-3.9
Standard Chartered Bank	Jul *	1.1	-0.1	0.3	1.5	0.2	0.5	6.4	3.7	0.6	-
UBS	Jul *	1.7	0.0	0.4	-1.6	0.2	-0.2	10.3	3.4	1.7	-
Non-City forecasters											
British Chambers of Commerce	Jun	1.3	-0.5	0.8	-3.2	0.1	-0.7	9.7	2.8	1.8	-3.0
Beacon Economic Forecasting	Jul *	1.2	0.7	0.8	0.2	0.3	0.6	7.4	4.7	0.6	-
Cambridge Econometrics	Jul *	1.6	-0.6	0.9	-3.0	0.2	0.8	10.4	2.3	2.1	-
CBI	May	1.7	0.2	0.8	4.5	0.1	1.1	8.6	6.1	0.5	-
CEBR	Jul *	1.2	-0.8	0.9	-1.8	-	-0.8	7.6	1.0	-	-
Economic Perspectives	Jul *	1.8	-0.1	0.4	4.0	0.0	0.6	5.2	1.5	1.0	-
Experian Business Strategies	Jul *	1.3	-0.4	-0.1	0.8	-0.2	-0.4	8.2	1.7	1.7	-
EIU	Jul *	1.1	-0.5	0.5	2.5	0.1	0.4	8.2	5.1	0.6	-
IHS Global Insight	Jun	1.4	0.0	0.2	-0.7	-	0.1	8.4	3.3	1.3	-
ITEM Club	May	1.8	0.5	0.3	3.0	0.0	1.2	9.9	7.2	0.5	-
Liverpool Macro Research	Jul *	1.9	2.0 c	-3.9 m	4.4 d	-	-	-	-	-	-
NIESR	May	1.4	-0.6	-0.3	1.6	0.1	-0.1	6.9	1.4	1.4	-
Oxford Economics	Jul *	1.3	-0.3	0.2	0.1	0.0	-0.3	8.2	2.0	1.6	-3.1
EC	Jun	1.7	0.3	0.8	0.1	0.0	0.4	8.9	4.0	1.2	-4.8
OECD	Jun	1.4	0.2	0.2	1.7	0.0	0.4	8.0	4.0	0.9	-4.0
IMF	Apr	1.7 ^	0.4	-	3.9	0.3	0.8	-	-	0.6	-2.6
Average of forecasts made in the last 3 months											
Independent		1.4	-0.3	0.5	1.0	0.1	0.1	8.1	3.1	1.2	-3.0
New (marked *)		1.3	-0.4	0.6	1.0	0.1	0.1	7.9	2.8	1.3	-2.6
City		1.3	-0.5	0.6	1.2	0.0	0.1	7.9	2.9	1.3	-2.5
Range of forecasts made in the last 3 months											
Highest		1.9	0.7	1.1	4.5	0.6	1.2	10.4	7.2	2.1	-0.7
Lowest		0.8	-1.5	-0.3	-3.2	-0.5	-0.8	5.2	0.4	0.5	-4.8
Median		1.3	-0.3	0.6	1.1	0.0	0.1	8.1	2.7	1.3	-3.1
OBR	Mar	1.7	0.6	0.8	2.3	0.2	1.1	7.9	5.0	0.7	-3.9

^ IMF growth forecast from the April 2011 World Economic Outlook. The IMF's June Article IV closing statement stated that 2011 "real GDP growth will remain a moderate 1 1/2 percent".

Table 2 - 201 I : Growth in prices and monetary indicators (% change)

Forecasters and dates of forecasts		CPI (Q4)	RPI (Q4)	RPIX (Q4)	Average earnings	Sterling index (Q4) (Jan 2005=100)	Official Bank rate (Q4, %)	Oil price (Brent, \$/bbl)	M4
City forecasters									
Bank of America - Merrill Lynch	Jul *	4.5	5.0	-	2.4	-	0.75	-	-
Barclays Capital	Jul *	4.6	5.6	4.8	3.9	-	0.50	-	-
Capital Economics	Jul *	5.2	5.6	5.6	2.2	79.5	0.50	85.0	-0.5
Citigroup	Jul *	4.7	5.6	5.6	2.7	78.0	0.70	106.7	-
Commerzbank	Jul *	4.9	5.9	5.9	2.4	80.0	0.67	108.2	-1.4
Daiwa Capital Markets	Jul *	4.0	5.0	4.6	2.0	78.5	0.50	110.0	2.6
Deutsche Bank	Apr	4.0	4.3	-	2.6	82.0	1.00	-	2.3
Goldman Sachs	Jul *	4.3	5.2	-	2.8	81.0 g	-	95.0	9.6 k
HSBC	Jul *	4.2	4.8	-	1.9	-	0.50	-	-
ING Financial Markets	Jul *	5.0	5.4	5.2	2.7	-	0.50	115.0	5.0
J P Morgan	Jul *	4.6	5.2	4.4	-	-	-	-	-
Lombard Street	Jul *	4.5	5.0	-	2.7	-	0.50	-	2.8
Morgan Stanley	Jul *	4.4	5.2	5.2	3.0	-	0.75	-	-
Nomura	Jul *	4.7	5.4	5.6	3.0	-	0.50	105.0	-
RBS Global Banking & Markets	Jul *	4.5	5.3	5.3	2.7	79.7	0.50	114.5	-
Schroders Investment Management	Jul *	4.4	4.9	5.2	3.1	-	0.50	-	-
Scotia Capital	Jul	5.1	5.2	5.2	2.5	-	0.50	-	-
Societe Generale	Jul *	4.5	4.8	4.8	2.4	77.0	0.50	118.0	-
Standard Chartered Bank	Jul *	4.2	-	-	-	-	0.50	113.0	-
UBS	Jul *	4.6	5.9	6.0	2.4	-	0.50	-	-
Non-City forecasters									
British Chambers of Commerce	Jun	4.6	5.4	5.5	2.7	-	1.00	110.0	-
Beacon Economic Forecasting	Jul *	4.0	4.3	4.7	2.4	78.4	0.90	113.2	3.3
Cambridge Econometrics	Jul *	4.0 h	3.9 h	4.4 h	2.0 j	74.3 h	0.60 h	114.9	-
CBI	May	3.9	5.1	4.3	2.6	78.5	1.00	112.2	-
CEBR	Jul *	3.7	4.6	4.2	2.2	77.2	0.50	112.0	-
Economic Perspectives	Jul *	4.5	5.5	5.3	2.5	75.0	0.50	105.0	3.0
Experian Business Strategies	Jul *	4.4	5.5	5.4	2.4	80.6	0.50	104.6	-
EIU	Jul *	4.6	5.3	5.2	2.4	78.2	0.50	108.5	-
IHS Global Insight	Jun	4.4	5.3	5.2	2.6	-	0.75	112.5	-
ITEM Club	May	4.4	4.9	4.7	2.3	81.2	0.70	120.0	4.3
Liverpool Macro Research	Jul *	3.4	-	3.8	5.4	79.4	-	-	-
NIESR	May	4.4	5.4	4.9	2.5 j	80.2 k	1.00	115.3 n	-
Oxford Economics	Jul *	4.7	5.3	5.4	2.5	78.5	0.50	111.7	-0.7
EC	Jun	4.1 h	-	-	2.8	-	-	117.4	-
OECD	Jun	3.9	-	-	-	-	-	80.0	-
IMF	Apr	3.9	-	-	-	-	-	-	-
Average of forecasts made in the last 3 months									
Independent		4.4	5.2	5.1	2.7	78.6	0.6	108.7	2.0
New (marked *)		4.5	5.2	5.1	2.7	78.5	0.6	108.3	1.8
City		4.6	5.3	5.2	2.6	78.8	0.6	107.0	1.7
Range of forecasts made in the last 3 months									
Highest		5.2	5.9	6.0	5.4	81.2	1.0	120.0	5.0
Lowest		3.4	4.3	3.8	1.9	75.0	0.5	80.0	-1.4
Median		4.5	5.3	5.2	2.5	78.5	0.5	111.8	2.8
OBR	Mar	3.9	4.7	3.9	2.0	81.1	-	113.0 i	-

Table 3 - 2011: Growth in other selected variables (% change)

Forecasters and dates of forecasts	House price inflation (Q4)	Real household disposable income	Employment growth	Claimant unemployment (Q4,millions)	Manufacturing output	World trade in goods and services	Current account (£bn)	Size of APF purchases (£bn)	PSNB (£bn 2011-12)	
City forecasters										
Bank of America - Merrill Lynch	Jul *	-	-	0.7	1.60	3.1	-	-27.0	200.0	125.0
Barclays Capital	Jul *	2.4 y	-1.5	0.8	1.44	2.8	-	-30.0	200.0	127.9
Capital Economics	Jul *	-5.0 y	-2.0	0.9	1.50	3.0	-	-30.0	200.0	125.0 s
Citigroup	Jul *	-2.2 xy	-1.6	0.8	1.56	2.9	-	-28.3	200.0	112.5
Commerzbank	Jul *	3.6 y	-0.5	0.5	1.55	2.0	6.5	-30.4	200.0	128.0
Daiwa Capital Markets	Jul *	-3.1 z	-2.6	0.5	1.55	3.1	-	-33.0	200.0	132.0
Deutsche Bank	Apr	-5.0 xy	-	-	1.40	4.3	-	-35.7	200.0	117.0
Goldman Sachs	Jul *	-	-	0.8	-	3.8	-	-22.4	-	117.0 s
HSBC	Jul *	-	-	-	-	-	3.0	-27.3	200.0	122.0
ING Financial Markets	Jul *	-4.5 x	-1.5	0.2	1.50	3.2	-	-29.0	200.0	125.0
J P Morgan	Jul *	-	-	-	-	-	-	-22.4	-	118.0
Lombard Street	Jul *	-2.5 k	-0.5	0.3	-	-	-	-29.6	200.0	125.0
Morgan Stanley	Jul *	-3.0 x	-0.4	0.5	-	3.5	-	-	-	124.6
Nomura	Jul *	-0.1 z	-	0.7	-	-	-	-35.4	200.0	127.6
RBS Global Banking & Markets	Jul *	-	-0.3	0.5	1.58	2.8	-	-32.0	-	120.0
Schroders Investment Management	Jul *	-0.1 x	-	0.2	1.50	2.9	-	-34.0	200.0	128.0
Scotia Capital	Jul *	0.7 y	-	0.7	1.52	2.7	-	-30.6	200.0	124.0
Societe Generale	Jul *	-2.0 x	-	0.9	1.62	2.9	-	-28.0	200.0	122.0
Standard Chartered Bank	Jul *	-	-	-	1.60	-	-	-	200.0	125.0
UBS	Jul *	1.5 x	-	-	1.44	3.9	-	-6.0	-	110.0
Non-City forecasters										
British Chambers of Commerce	Jun	1.0 x	-	-	1.50	4.0	6.0 o	-	200.0	124.5
Beacon Economic Forecasting	Jul *	2.2 z	-	0.4	1.51	2.7	9.0	-56.4	200.0	157.3
Cambridge Econometrics	Jul *	-	-0.5	-0.2	1.50 h	4.4	2.9 t	-2.3	-	135.9 h
CBI	May	-4.8 z	-0.9	0.2	1.47	4.0	-	-36.9	-	122.9
CEBR	Jul *	-0.7 k	-1.7	0.7	1.51	3.2	-	-	200.0	125.0
Economic Perspectives	Jul *	-2.0 x	-1.5	0.6	1.60	2.2	7.0	-26.0	200.0	125.0
Experian Business Strategies	Jul *	-0.7 z	-1.8	0.2	1.70	6.2	-	-52.8	-	128.3
EIU	Jul *	-	-1.5	0.7	1.64	2.4	-	-31.5	200.0	130.0
IHS Global Insight	Jun	-4.2 x	-1.4	0.3	1.56	3.5	-	-34.4	200.0	126.5
ITEM Club	May	-4.0 z	-0.8	0.3	1.58	4.7	7.0	-28.8	-	115.3
Liverpool Macro Research	Jul *	-	-	-	-	-	-	-18.0	-	113.7
NIESR	May	-0.3 hz	-1.3	-0.4	2.73 hp	-	6.2	-34.4	-	126.3
Oxford Economics	Jul *	-3.1 z	-1.2	0.2	1.57	2.7	7.2 o	-28.1	-	127.0
EC	Jun	-	-	0.4	8.00 hq	-	-	-1.2 a	-	8.1 ab
OECD	Jun	-	-	-	8.10 hq	-	-	-1.5 a	-	8.7 ah
IMF	Apr	-	-	-	-	-	-	-2.4 a	-	8.6 ah
Average of forecasts made in the last 3 months										
Independent		-1.4	-1.2	0.5	1.55	3.3	6.5	-29.5	200.0	124.8
New (marked *)		-1.0	-1.3	0.5	1.55	3.2	6.4	-28.8	200.0	125.1
City		-1.1	-1.2	0.6	1.54	3.0	4.8	-28.0	200.0	123.3
Range of forecasts made in the last 3 months										
Highest		3.6	-0.3	0.9	1.70	6.2	9.0	-2.3	200.0	157.3
Lowest		-5.0	-2.6	-0.4	1.44	2.0	3.0	-56.4	200.0	110.0
Median		-2.0	-1.4	0.5	1.55	3.1	6.8	-29.8	200.0	125.0
OBR	Mar	-2.3 hz	-0.4	-0.1	1.56	-	6.9	-41	-	122

Table 4 - 2012: Growth in GDP and its components (% change)

Forecasters and dates of forecasts		GDP	Private consumption	Government consumption	Fixed investment	Change in inventories contribution (% of GDP)	Domestic demand	Total exports	Total imports	Net trade contribution (% of GDP)	Output Gap (as % of potential GDP)
City forecasters											
Bank of America - Merrill Lynch	Jul *	2.3	1.4	-1.3	5.6	0.1	-	-	-	0.7	-
Barclays Capital	Jul *	1.9	1.3	-1.1	4.4	0.1	1.2	4.9	2.6	0.6	-
Capital Economics	Jul *	1.5	-1.0	-1.0	5.0	0.7	0.1	6.0	1.0	1.4	-
Citigroup	Jul *	2.3	1.2	0.1	6.0	0.0	1.7	7.0	4.6	0.6	-
Commerzbank	Jul *	2.1	1.9	-1.1	4.7	0.0	1.7	3.5	2.2	0.3	-2.7
Daiwa Capital Markets	Jul *	1.7	0.8	-2.0	5.5	-0.1	0.9	6.7	3.6	0.8	-3.7
Deutsche Bank	Apr	2.0	1.6	-1.3	5.2	0.0	1.9	3.3	2.0	0.2	-
Goldman Sachs	Jul *	2.6	0.8	-0.1	9.6	0.0	1.9	7.2	4.6	0.7	-2.9 k
HSBC	Jul *	1.6	1.5	-1.4	4.2	-0.1	1.2	3.7	2.2	-	-
ING Financial Markets	Jul *	2.0	2.1	-2.6	7.8	0.0	2.0	8.5	8.4	0.1	-
J P Morgan	Jul *	2.4	1.5	-1.0	8.2	0.2	-	6.5	4.0	0.6	-
Lombard Street	Jul *	2.3	1.4	-1.0	6.1	-0.2	1.4	5.6	2.4	0.9	-2.8
Morgan Stanley	Jul *	1.8	1.4	-2.1	3.0	0.1	0.0	6.5	3.3	0.8	-
Nomura	Jul *	2.3	2.2	-1.3	4.7	0.0	1.8	5.3	3.5	0.4	-1.3
RBS Global Banking & Markets	Jul *	1.9	1.3	-1.3	5.1	-	1.3	6.0	3.9	0.6	-
Schroders Investment Management	Jul *	1.9	1.9	-1.1	7.2	0.0	2.1	7.7	7.7	-0.2	0.1
Scotia Capital	Jul *	1.6	1.0	-1.0	5.2	0.0	1.1	6.4	4.5	0.5	-2.0
Societe Generale	Jul *	1.9	0.7	-0.7	4.0	0.2	1.1	9.0	6.0	0.7	-3.6
Standard Chartered Bank	Jul *	1.9	1.6	-1.1	4.5	0.4	1.6	6.2	4.8	0.3	-
UBS	Jul *	2.2	1.7	-1.8	5.4	0.0	1.5	8.4	5.7	0.7	-
Non-City forecasters											
British Chambers of Commerce	Jun	2.2	1.1	-0.5	3.9	0.0	1.1	7.5	3.6	1.1	-2.5
Beacon Economic Forecasting	Jul *	2.9	4.1	-1.1	7.6	0.8	3.9	8.7	11.6	-1.3	-
Cambridge Econometrics	Jul *	1.9	1.3	-1.6	4.1	-0.1	2.0	7.9	4.6	0.9	-
CBI	May	2.2	1.1	-1.2	5.5	0.2	1.4	7.6	4.6	0.8	-
CEBR	Jul *	1.6	0.9	-0.6	1.8	-	0.7	5.2	2.3	-	-
Economic Perspectives	Jul *	1.6	0.6	-1.1	8.7	-0.1	1.4	1.4	1.1	0.1	-
Experian Business Strategies	Jul *	2.0	1.5	-2.0	4.7	-0.1	1.2	6.6	3.5	0.8	-
EIU	Jul *	1.5	0.8	-0.8	3.6	0.1	1.0	6.7	4.2	0.5	-
IHS Global Insight	Jun	2.1	2.0	-1.6	6.5	-	1.9	5.4	4.7	0.2	-
ITEM Club	May	2.3	1.3	-1.4	5.7	0.0	1.8	9.0	6.7	0.5	-
Liverpool Macro Research	Jul *	2.4	2.2 c	-2.8 m	6.4 d	-	-	-	-	-	-
NIESR	May	2.0	0.6	-1.3	2.2	0.0	0.4	4.3	-1.1	1.6	-
Oxford Economics	Jul *	2.2	1.2	-1.4	5.4	0.0	1.2	7.5	3.8	1.0	-2.2
EC	Jun	2.1	0.8	-1.0	4.0	-0.1	0.9	7.5	2.5	1.4	-4.1
OECD	Jun	1.8	1.1	-0.7	4.2	0.1	1.2	6.1	3.7	0.6	-3.4
IMF	Apr	2.3	1.5	-	6.4	0.0	1.6	-	-	0.7	-2.3
Average of forecasts made in the last 3 months											
Independent		2.0	1.3	-1.2	5.3	0.1	1.4	6.5	4.1	0.6	-2.6
New (marked *)		2.0	1.4	-1.2	5.5	0.1	1.4	6.4	4.2	0.5	-2.3
City		2.0	1.3	-1.2	5.6	0.1	1.3	6.4	4.2	0.6	-2.3
Range of forecasts made in the last 3 months											
Highest		2.9	4.1	0.1	9.6	0.8	3.9	9.0	11.6	1.6	0.1
Lowest		1.5	-1.0	-2.6	1.8	-0.2	0.0	1.4	-1.1	-1.3	-4.1
Median		2.0	1.3	-1.1	5.1	0.0	1.3	6.6	3.9	0.6	-2.7
OBR	Mar	2.5	1.3	-1.2	6.0	0.0	1.5	6.5	2.9	1.0	-3.6

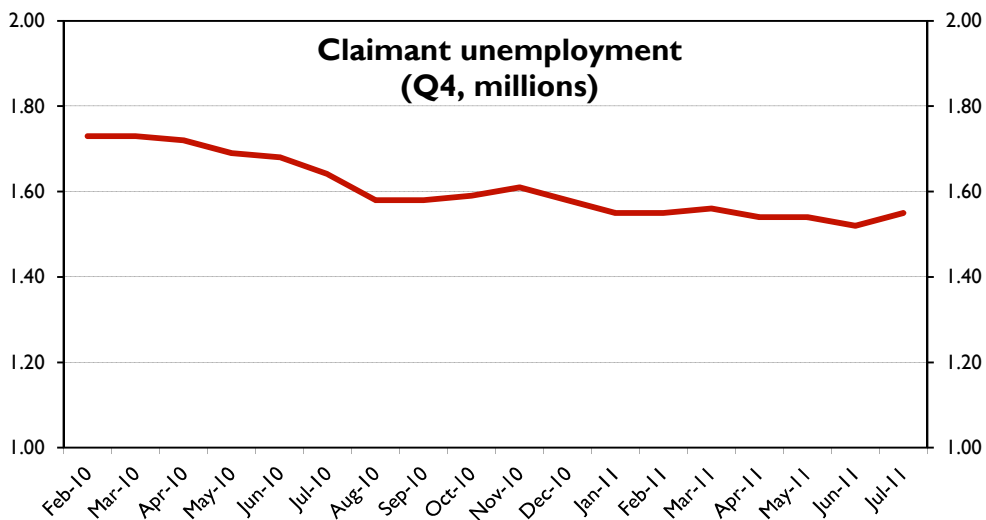
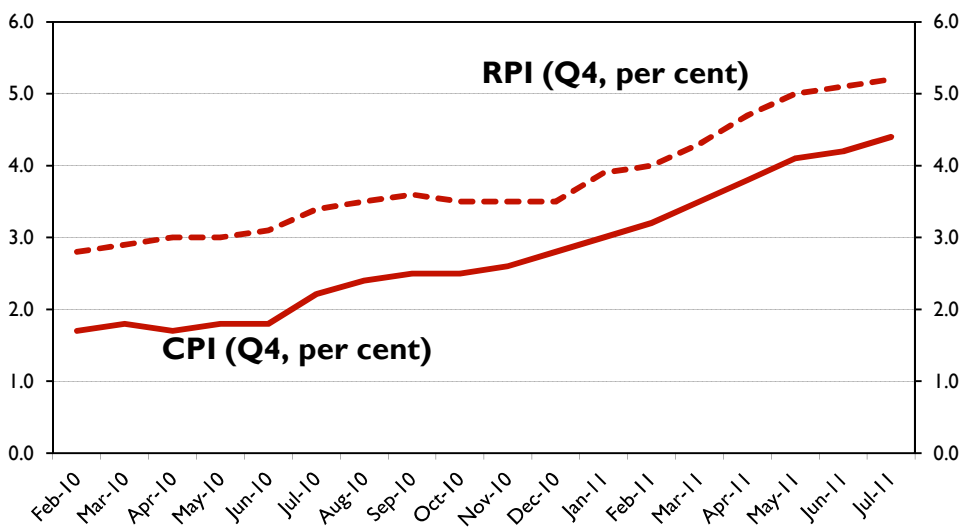
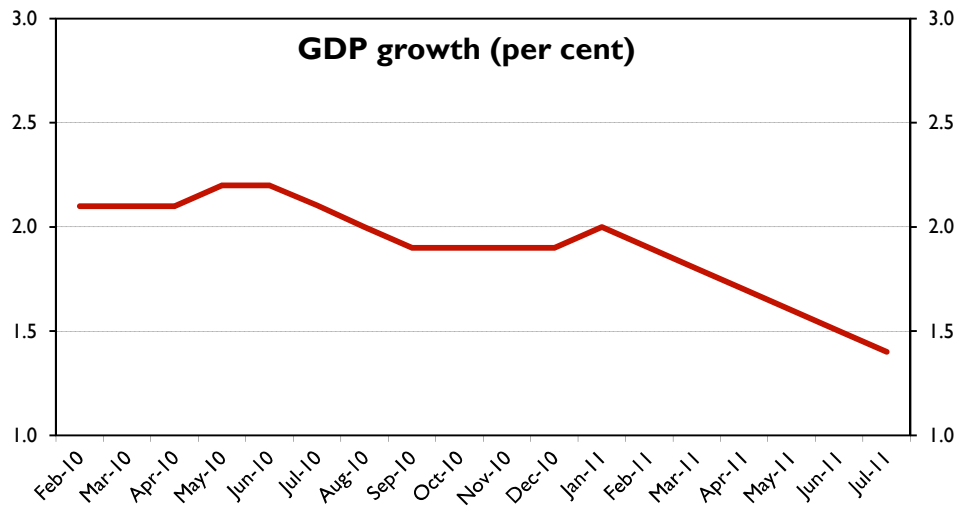
Table 5 - 2012: Growth in prices and monetary indicators (% change)

Forecasters and dates of forecasts		CPI (Q4)	RPI (Q4)	RPIX (Q4)	Average earnings	Sterling index (Q4) (Jan 2005=100)	Official Bank rate (Q4, %)	Oil price (Brent, \$/bbl)	M4
City forecasters									
Bank of America - Merrill Lynch	Jul *	2.0	3.3	-	2.8	-	1.50	-	-
Barclays Capital	Jul *	2.9	4.3	5.7	4.8	-	1.50	-	-
Capital Economics	Jul *	1.4	2.3	2.5	2.6	80.9	0.50	80.0	1.5
Citigroup	Jul *	2.9	5.3	4.6	2.9	78.0	0.40	110.7	-
Commerzbank	Jul *	2.2	3.2	2.5	2.3	83.7	1.67	106.3	1.9
Daiwa Capital Markets	Jul *	1.8	3.2	2.8	3.0	79.0	0.50	105.0	3.2
Deutsche Bank	Apr	1.8	2.1	-	4.0	82.0	2.50	-	6.0
Goldman Sachs	Jul *	2.2	4.0	-	3.5	81.0 g	-	95.0	8.7 k
HSBC	Jul *	1.9	3.4	-	2.5	-	1.50	-	-
ING Financial Markets	Jul *	1.3	2.3	2.0	3.2	-	1.50	120.0	6.0
J P Morgan	Jul *	2.9	4.0	2.4	-	-	-	-	-
Lombard Street	Jul *	1.6	2.4	-	3.5	-	1.00	-	4.6
Morgan Stanley	Jul *	2.5	3.5	3.2	3.0	-	1.75	-	-
Nomura	Jul *	2.1	3.1	2.9	3.8	-	1.50	110.0	-
RBS Global Banking & Markets	Jul *	2.5	3.3	3.3	3.5	78.7	1.00	119.5	-
Schroders Investment Management	Jul *	3.0	3.3	3.2	3.3	-	1.50	-	-
Scotia Capital	Jul *	2.2	4.0	3.5	2.9	-	1.00	-	-
Societe Generale	Jul *	2.4	3.2	2.5	3.2	75.0	1.25	-	-
Standard Chartered Bank	Jul *	1.7	-	-	-	-	1.00	101.0	-
UBS	Jul *	2.4	3.3	3.0	1.9	-	1.50	-	-
Non-City forecasters									
British Chambers of Commerce	Jun	2.6	3.3	3.3	3.0	-	2.75	95.0	-
Beacon Economic Forecasting	Jul *	1.8	2.8	2.9	3.0	81.6	1.80	116.5	5.3
Cambridge Econometrics	Jul *	2.3 h	2.6 h	2.5 h	2.7 j	76.7 h	1.10 h	115.1	-
CBI	May	2.1	4.0	3.0	3.1	81.6	2.50	103.5	-
CEBR	Jul *	1.8	2.7	2.8	2.2	79.1	1.00	105.0	-
Economic Perspectives	Jul *	3.5	4.5	4.5	3.4	70.0	2.50	105.0	10.0
Experian Business Strategies	Jul *	2.7	3.5	3.1	2.5	86.1	1.90	106.5	-
EIU	Jul *	3.0	3.4	3.2	2.8	78.5	0.75	94.5	-
IHS Global Insight	Jun	2.0	2.6	2.9	3.0	-	2.00	112.2	-
ITEM Club	May	2.1	4.1	2.7	2.7	80.5	1.90	100.0	2.8
Liverpool Macro Research	Jul *	2.6	-	3.1	4.3	87.4	-	-	-
NIESR	May	1.4	2.4	1.8	2.9 j	81.1 k	2.00	123.7 n	-
Oxford Economics	Jul *	1.8	3.2	2.5	3.0	81.8	1.41	109.2	3.3
EC	Jun	2.4	-	-	4.0	-	-	117.2	-
OECD	Jun	1.7	-	-	-	-	-	80.0	-
IMF	Apr	1.9	-	-	-	-	-	-	-
Average of forecasts made in the last 3 months									
Independent		2.2	3.4	3.1	3.1	80.1	1.5	104.9	4.3
New (marked *)		2.3	3.4	3.2	3.1	80.0	1.3	106.2	4.5
City		2.2	3.4	3.2	3.1	79.2	1.2	105.3	3.4
Range of forecasts made in the last 3 months									
Highest		3.5	5.3	5.7	4.8	87.4	2.8	120.0	10.0
Lowest		1.3	2.3	1.8	1.9	70.0	0.4	80.0	1.5
Median		2.2	3.3	3.0	3.0	80.5	1.5	105.6	3.3
OBR	Mar	2.2	3.4	2.7	2.2	81.0	-	112.0 i	-

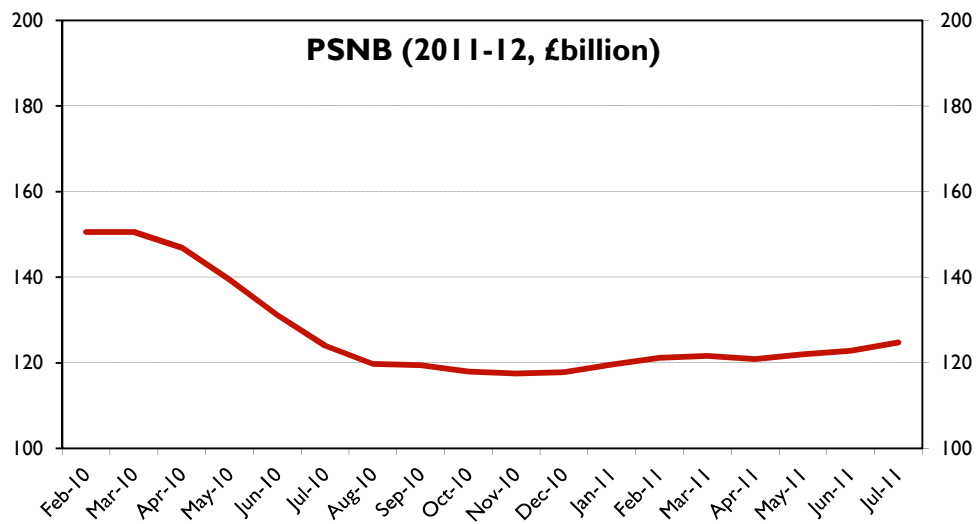
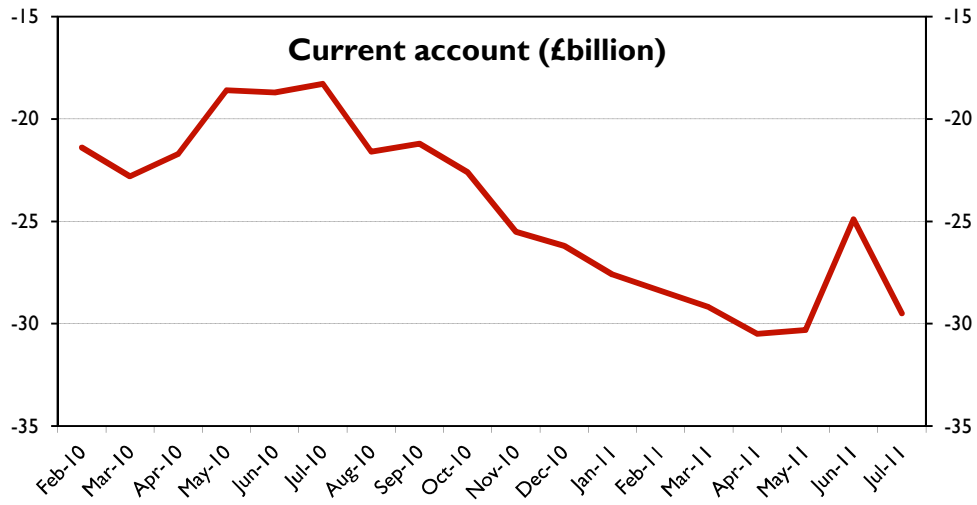
Table 6 - 2012: Growth in other selected variables (% change)

Forecasters and dates of forecasts		House price inflation (Q4)	Real household disposable income	Employment growth	Claimant unemployment (Q4,millions)	Manufacturing output	World trade in goods and services	Current account (£bn)	Size of APF purchases (£bn)	PSNB (£bn 2012-13)
City forecasters										
Bank of America - Merrill Lynch	Jul *	-	-	0.6	1.50	4.4	-	-18.0	200.0	107.0
Barclays Capital	Jul *	4.9 y	1.6	0.5	1.47	2.0	-	-21.5	200.0	107.9
Capital Economics	Jul *	-7.0 y	-1.0	-0.7	1.70	2.0	-	-25.0	250.0	110.0 s
Citigroup	Jul *	2.3 xy	-0.3	0.8	1.46	1.6	-	-3.3	200.0	87.1
Commerzbank	Jul *	-0.6 y	1.9	-0.2	1.60	1.9	6.1	-24.1	200.0	108.0
Daiwa Capital Markets	Jul *	1.7 z	-0.4	-0.1	1.52	3.1	-	-24.0	200.0	111.0
Deutsche Bank	Apr	0.0	-	-	1.34	2.8	-	-34.6	200.0	91.0
Goldman Sachs	Jul *	-	-	0.7	-	4.2	-	-9.9	-	84.0 s
HSBC	Jul *	-	-	-	-	-	1.4	-26.0	200.0	98.0
ING Financial Markets	Jul *	-2.0 x	2.0	0.7	1.39	2.8	-	-34.0	200.0	98.0
J P Morgan	Jul *	-	-	-	-	-	-	-9.9	-	91.0
Lombard Street	Jul *	2.9 k	1.4	0.6	-	-	-	-28.5	200.0	95.0
Morgan Stanley	Jul *	-7.0 x	-0.3	0.0	-	2.6	-	-	-	97.7
Nomura	Jul *	2.4 z	-	1.1	-	-	-	-32.9	200.0	115.0
RBS Global Banking & Markets	Jul *	-	1.6	0.2	1.56	1.2	-	-12.0	-	95.0
Schroders Investment Management	Jul *	2.9 x	-	0.3	1.46	1.7	-	-42.0	150.0	108.0
Scotia Capital	Jul *	3.0 y	-	0.2	1.49	2.2	-	-15.4	200.0	105.0
Societe Generale	Jul *	-2.0 x	-	0.6	1.67	3.5	-	-19.0	150.0	101.0
Standard Chartered Bank	Jul *	-	-	-	1.40	-	-	-	200.0	105.0
UBS	Jul *	2.0 x	-	-	1.50	2.6	-	-4.0	-	85.0
Non-City forecasters										
British Chambers of Commerce	Jun	3.0 x	-	-	1.50	3.1	5.5 o	-	150.0	107.7
Beacon Economic Forecasting	Jul *	10.1 z	-	0.2	1.46	2.6	13.3	-77.7	200.0	148.8
Cambridge Econometrics	Jul *	-	1.2	0.2	1.60 h	4.5	3.3 t	7.9	-	119.9 h
CBI	May	4.0 z	1.3	0.5	1.41	3.2	-	-30.4	-	105.0
CEBR	Jul *	3.8 k	-0.1	0.1	1.53	1.5	-	-	200.0	97.0
Economic Perspectives	Jul *	3.0 x	-1.0	0.8	1.60	1.5	5.0	-20.0	250.0	90.0
Experian Business Strategies	Jul *	2.2 z	0.5	0.5	1.50	4.2	-	-36.7	-	109.1
EIU	Jul *	-	0.4	0.2	1.61	1.2	-	-29.7	250.0	109.0
IHS Global Insight	Jun	-0.3 x	1.3	0.0	1.60	2.8	-	-29.9	175.0	103.8
ITEM Club	May	3.7 z	-0.3	1.2	1.59	4.9	8.0	-15.0	-	87.2
Liverpool Macro Research	Jul *	-	-	-	-	-	-	-17.8	-	87.2
NIESR	May	-1.0 hz	1.7	0.7	2.66 hp	-	5.7	-17.4	-	109.4
Oxford Economics	Jul *	1.6 z	1.4	0.2	1.58	2.8	7.5 o	-25.2	-	105.1
EC	Jun	-	-	0.5	7.80 hq	-	-	-0.1 a	-	6.6 ab
OECD	Jun	-	-	-	8.30 hq	-	-	-0.9 a	-	7.1 ah
IMF	Apr	-	-	-	-	-	6.9	-1.9 a	-	6.9 ah
Average of forecasts made in the last 3 months										
Independent		1.6	0.7	0.4	1.53	2.7	6.6	-22.1	198.8	102.6
New (marked *)		1.3	0.6	0.3	1.53	2.6	6.5	-22.9	202.8	102.5
City		0.3	0.7	0.4	1.52	2.6	3.8	-20.6	196.4	100.9
Range of forecasts made in the last 3 months										
Highest		10.1	2.0	1.2	1.70	4.9	13.3	7.9	250.0	148.8
Lowest		-7.0	-1.0	-0.7	1.39	1.2	1.4	-77.7	150.0	85.0
Median		2.4	1.2	0.5	1.50	2.6	5.9	-21.5	200.0	105.0
OBR	Mar	0.1 hz	1.4	0.6	1.50	-	6.8	-34	-	101

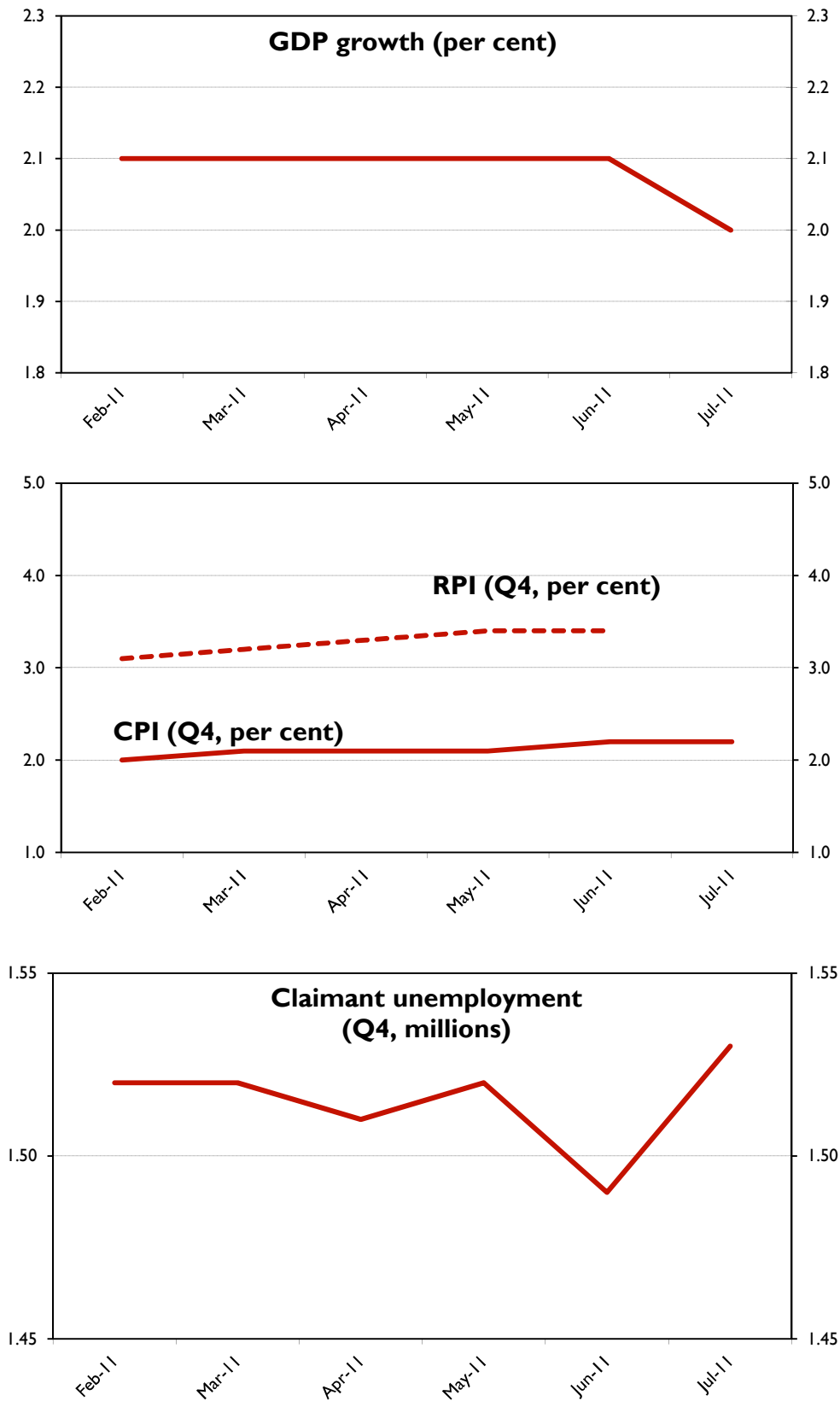
Average of independent forecasts for 2011; GDP growth, CPI and RPI inflation and claimant unemployment



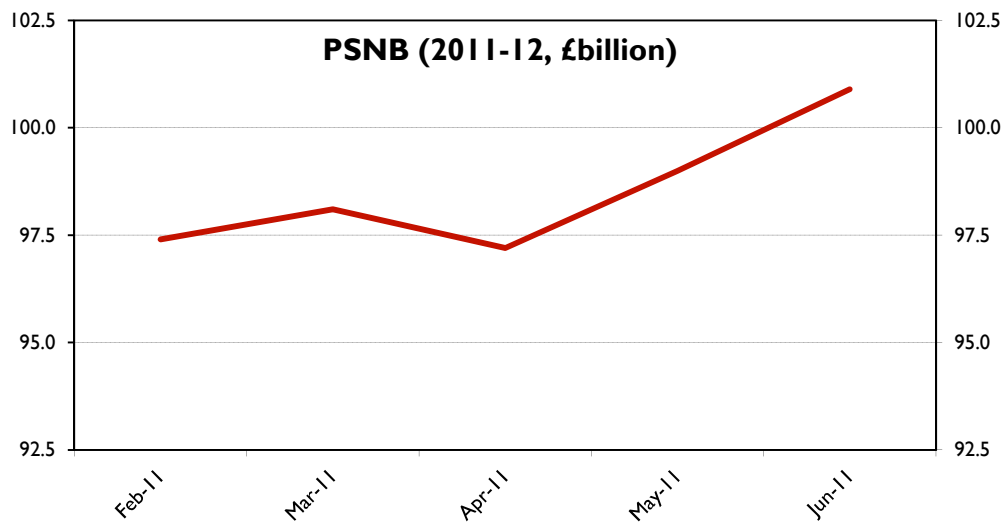
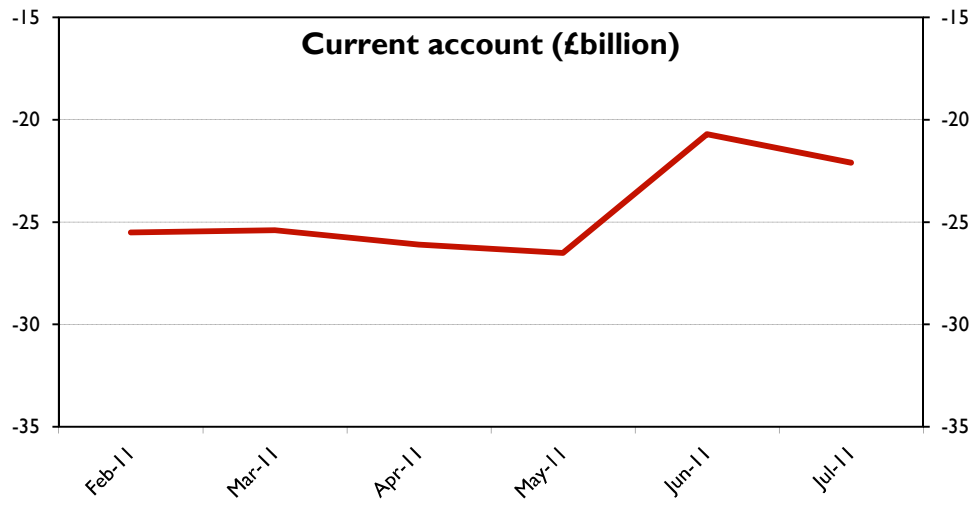
Average of independent forecasts for 2011; Current account and PSNB (2011-12)



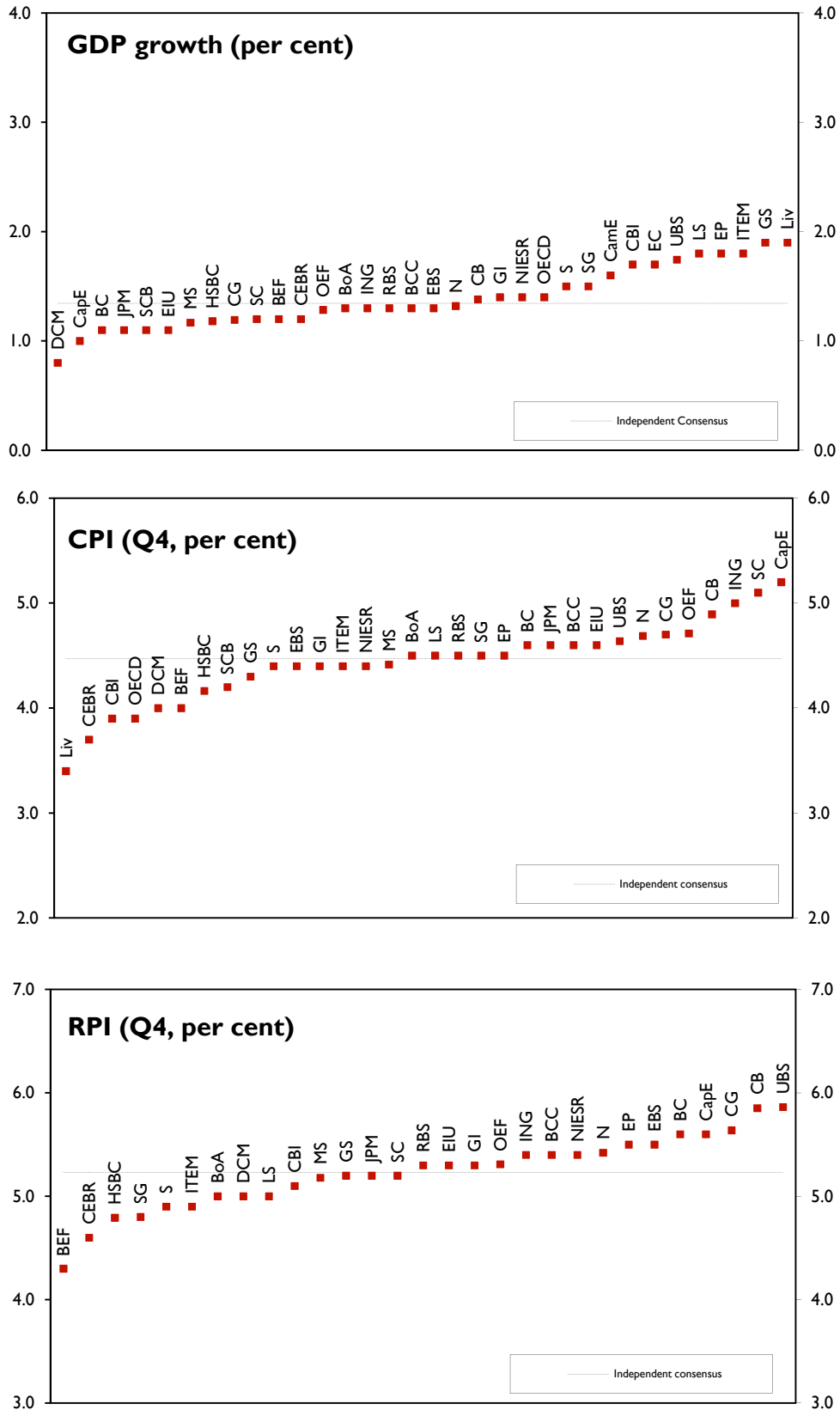
Average of independent forecasts for 2012; GDP growth, CPI and RPI inflation and claimant unemployment



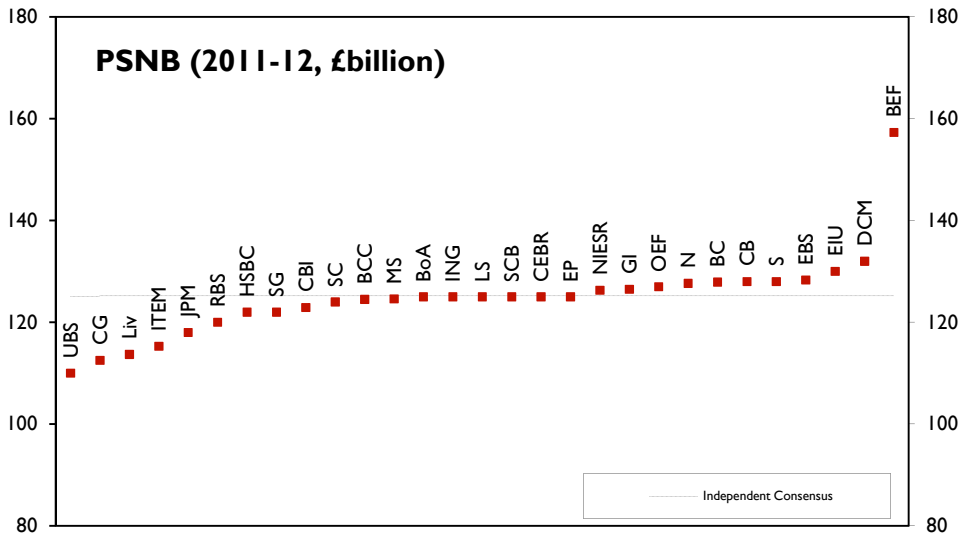
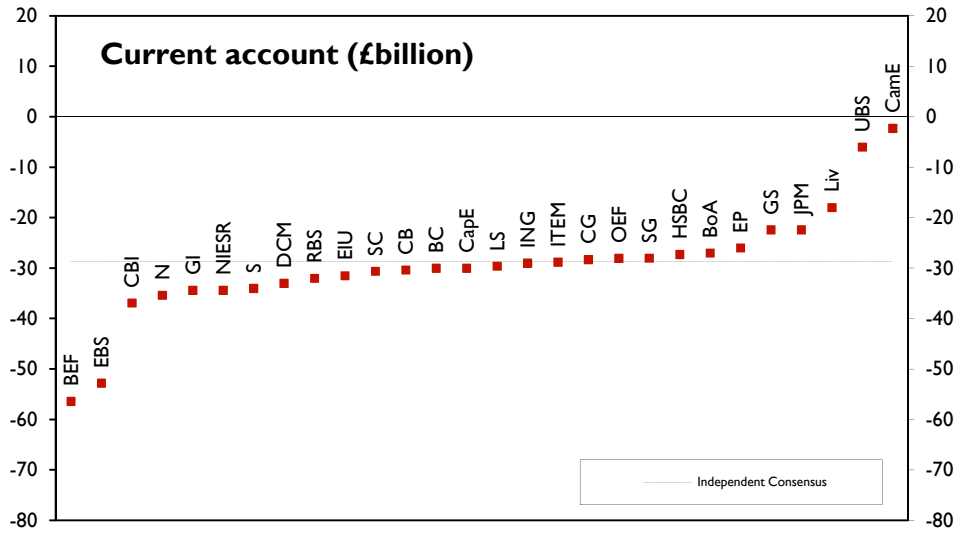
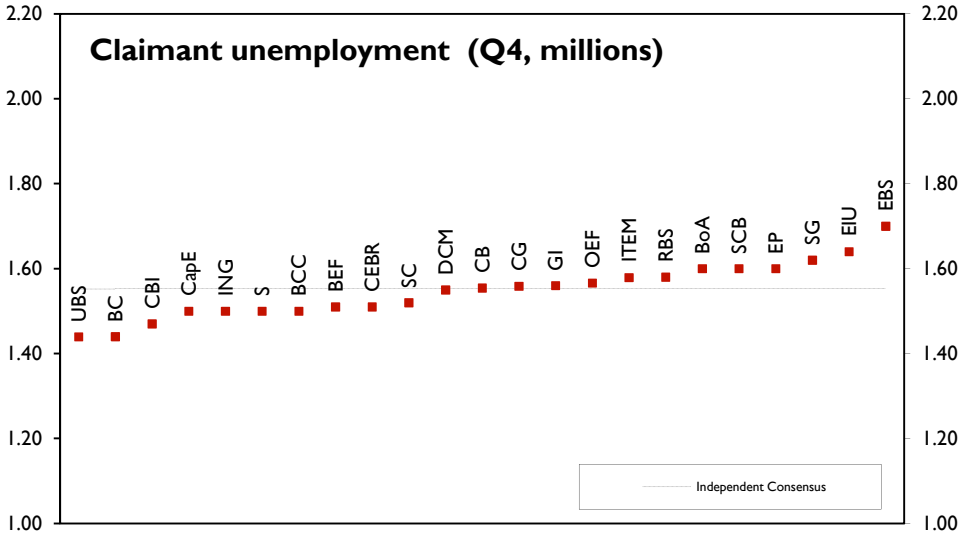
Average of independent forecasts for 2012; Current account and PSNB (2012-13)



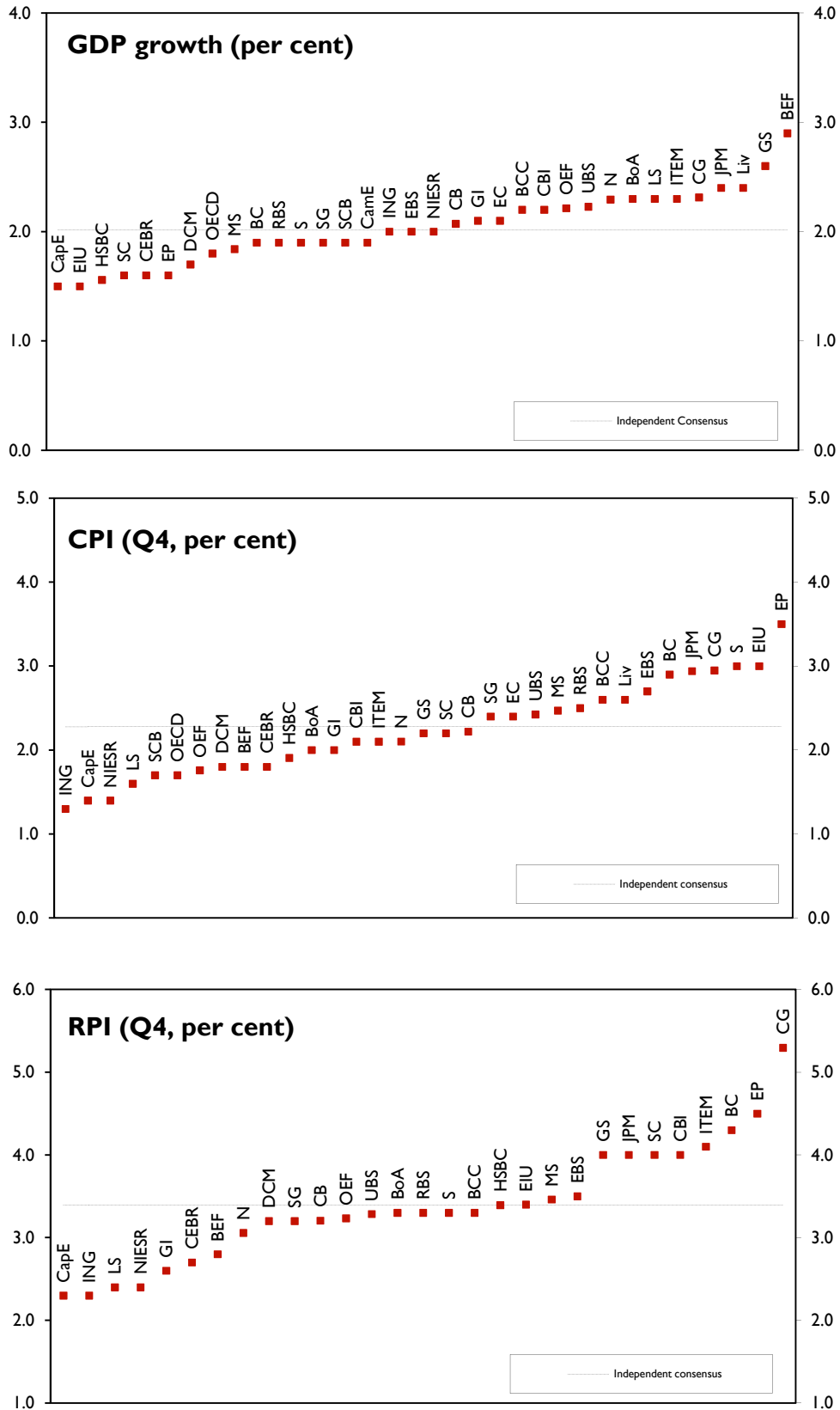
**Dispersion around the independent consensus for 2011;
GDP growth, CPI and RPI inflation made in the last 3 months**



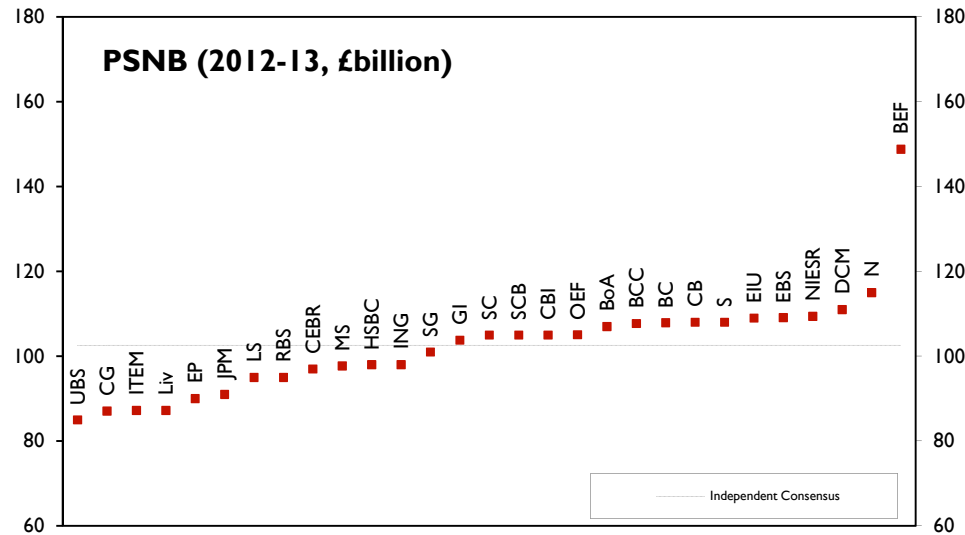
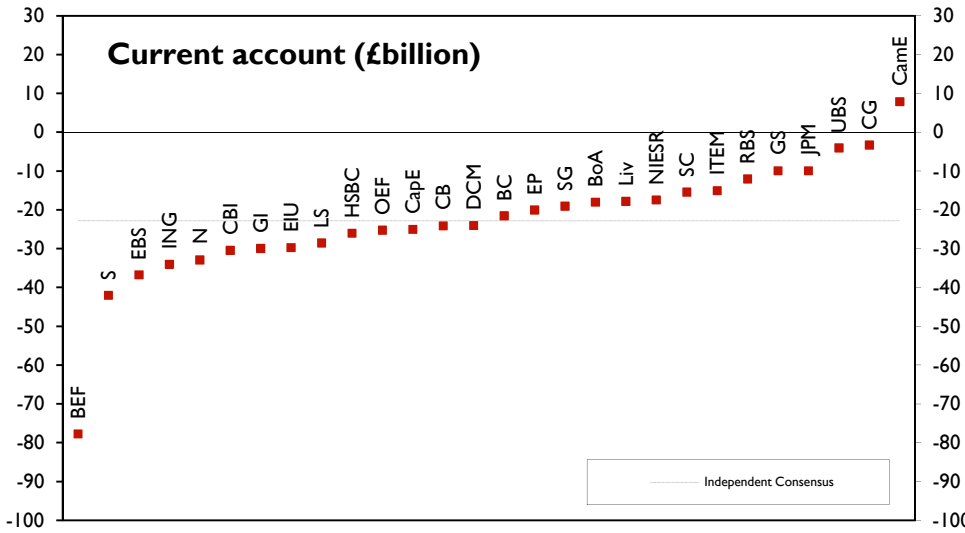
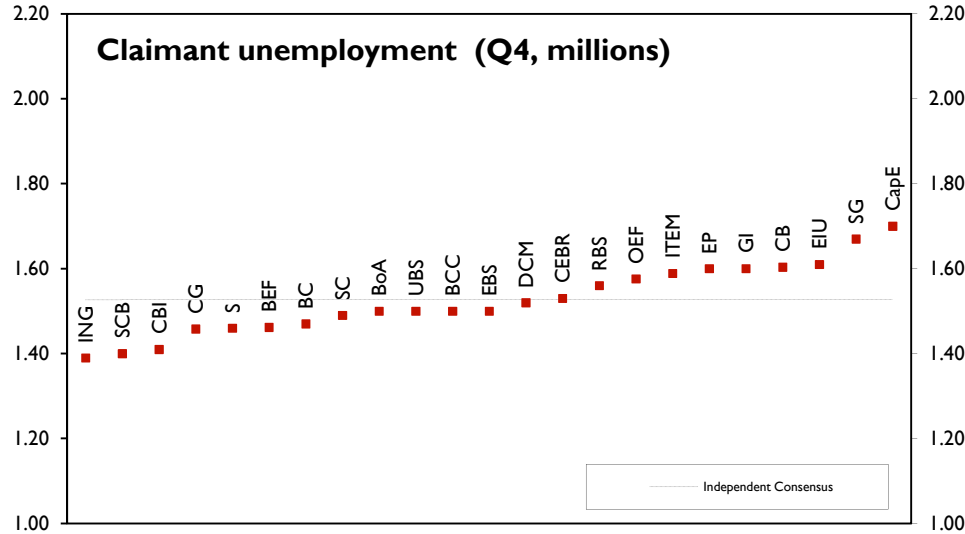
**Dispersion around the independent consensus for 2011;
Claimant unemployment, current account and PSNB (2011-12)
made in last 3 months**



**Dispersion around the independent consensus for 2012;
GDP growth, CPI and RPI inflation made in the last 3 months**



**Dispersion around the independent consensus for 2012;
Claimant unemployment, current account and PSNB (2012-13)
made in last 3 months**



Annex I: Forecasting institutions referred to in charts and tables

AA	ABN AMRO
BoA	Bank of America - Merrill Lynch
BC	Barclays Capital
BCC	British Chambers of Commerce
BEF	Beacon Economic Forecasting
BP	BNP Paribas
CamE	Cambridge Econometrics
CapE	Capital Economics
CG	Citigroup
CBI	Confederation of British Industry
CEBR	Centre for Economics and Business Research
CB	Commerzbank
DCM	Daiwa Capital Markets
DB	Deutsche Bank
EBS	Experian Business Strategies (previously BSL)
EC*	European Commission
EIU	Economist Intelligence Unit
EP	Economic Perspectives
GI	IHS Global Insight
GS	Goldman Sachs
HSBC	HSBC Global Research
ING	ING Financial Markets
IMF*	International Monetary Fund
ITEM	ITEM Club
JPM	JP Morgan Chase
Liv	Liverpool Macro Research
LS	Lombard Street Research
MS	Morgan Stanley
NIESR	National Institute of Economic and Social Research
OECD*	Organisation for Economic Cooperation and Development
OEF	Oxford Economic Forecasting
RBS	Royal Bank Of Scotland Global Banking & Markets
SC	Scotia Capital
S	Schroders Investment Management
SG	Societe Generale
SCB	Standard Chartered Bank
UBS	UBS

* Forecasts from the EC, IMF and OECD are updated when a full forecast is produced.

Annex 2: Data definitions

GDP	National accounts, Table C2, Code ABMI
Private consumption	Households + NPISH, National accounts, Table C2, Code ABJR+HAYO
General government consumption	National accounts, Table C2, Code NMRY
Gross fixed investment	National accounts, Table C2, Code NPQT
Change in inventories	National Accounts, Table C2, Code CAFU
Domestic demand	National Accounts, Table C2, Code YBIM
Exports (goods and services)	National Accounts, Table C2, Code IKBK
Imports (goods and services)	National Accounts, Table C2, Code IKBL
Output Gap	The gap between actual output and trend (or potential) output, expressed as a percentage of trend (or potential) c
CPI (Q4)	Consumer Price Indices release, Table 1, Code D7G7
RPI (Q4)	Consumer Price Indices release, Table 1, Code CZBH
RPIX (Q4)	Consumer Price Indices release, Table 1, Code CDKQ
Whole Economy Average Weekly Earnings (Total Pay)	Labour market statistics, Table 15
Sterling index (Q4, Jan 2005=100)	Bank of England Monetary and Financial statistics division Code BK67
Official Bank Rate (Q4)	(Previously Bank of England repo rate (Q4)), Code BEDR
Oil price (\$ per barrel)	Brent crude, annual average
M4 growth	Bank of England Monetary and Financial statistics division Code VQJW, calendar year (previously financial year)
House price inflation	Q4 on Q4 annual percentage change in house prices
RHDI	National accounts, Table J2, Code NRJR
Employment growth	Workforce jobs, Labour market statistics, Table 4, Code DYDC
Claimant unemployment (Q4, mn)	Labour market statistics, Table 10, Code BCJD
Manufacturing Output	National accounts, Table B1, Code CKYY
World trade in goods and service	
Current account (£bn)	Balance of payments release, Table A, Code HBOP
Size of APF purchases (£bn)	http://www.bankofengland.co.uk/markets/apf/index.htm
Public Sector Net Borrowing	Public sector finances release, Table PSF 1 / Public sector accounts, Table PSAT 1, Code ANNX

Annex 3: Notation used in tables

a:	as a percentage of GDP
b:	non-durable consumption
c:	consumer expenditure less expenditure on durables and housing
d:	private sector investment, stockbuilding and durable consumption
e:	investment and stockbuilding combined
f:	contribution to GDP growth - percentage points
g:	end period
h:	calendar year
i:	financial year
j:	compensation of employees/head
k:	different definitions; refer to forecasters for details
l:	3 month interbank rate
m:	general government current and capital expenditure plus stockbuilding
n:	average of spot price of Brent crude and Dubai light crude
o:	world trade in manufacturing
p:	ILO unemployment - millions
q:	ILO unemployment rate
r:	PSNCR (Formerly PSBR)
s:	PSNB including the effect of financial interventions
t:	world GDP
u:	OPEC average
v:	final domestic demand
w:	percentage change
x:	based on Halifax house price index
y:	based on Nationwide house price index
z:	based on CLG house price series
aa:	claimant unemployment rate
ab:	treaty deficit

Annex 4: Organisation contact details

Organisation	Contact	E-mail address	Telephone number
ABN AMRO	Joost Beaumont	joost.beaumont@nl.abnamro.com	020 628 3437
Bank of America - Merrill Lynch	Nick Bate	Nick_Bate@ml.com	020 7995 4262
Barclays Capital	Blerina Uruci	Blerina.Uruci@barclayscapital.com	020 7773 4373
Beacon Economic Forecasting	David Smith	xxxbeaconxxx@btinternet.com	01923 897 885
British Chambers of Commerce	David Kern	David.Kern@btinternet.com	020 8904 6293
Cambridge Econometrics	Ragini Madan	rm@camecon.com	01223 533100
Capital Economics	Jonathan Loynes	Jonathan.loynes@capitaleconomics.com	020 7823 5000
Citigroup	Michael Saunders	Michael.Saunders@citigroup.com	020 7986 9297
CBI	David Muir	David.Muir@cbi.org.uk	020 7395 8102
CEBR	Charles Davis	Cdavis@cebr.com	020 7324 2863
Commerzbank	Peter Dixon	Peter.Dixon@commerzbank.com	020 7653 7271
Daiwa Capital Markets	Hetal Mehta	Hetal.Mehta@uk.daiwacm.com	020 7597 8338
Deutsche Bank	George Buckley	George.Buckley@db.com	020 7545 1372
Experian Business Strategies	Nowres Mohatam	nowres.mohatam@uk.experian.com	020 3042 4713
EC	Thomas Springbett	thomas.springbett@ec.europa.eu	0032 2296 7226
EIU	Neil Prothero	Neilprothero@eiu.com	020 7576 8308
Economic Perspectives	Peter Warburton	peter@economicperspectives.co.uk	01582 696 999
Goldman Sachs	Adrian Paul	Adrian.Paul@gs.com	-
HSBC	Alexander Pefanis	alexander.pefanis@hsbcib.com	-
IHS Global Insight	Howard Archer	Howard.Archer@ihsglobalinsight.com	020 3159 3563
ING Financial Markets	James Knightley	James.Knightley@uk.ing.com	020 7767 6614
ITEM club	Peter Spencer	Ps35@york.ac.uk	01904 323771
J P Morgan	Allan Monks	allan.j.monks@jpmorgan.com	020 7777 1080
Liverpool Macro Research	David Meenagh	Meenagh@cf.ac.uk	029 2087 5198
Lombard Street Research	Jamie Dannhauser	Jamie.Dannhauser@lombardstreetresearch.com	0207 382 5961
Morgan Stanley	Melanie Baker	Melanie.Baker@morganstanley.com	020 7425 8607
NIESR	Simon Kirby	S.Kirby@niesr.ac.uk	020 7222 7665
Nomura	Philip Rush	Philip.Rush@nomura.com	2071029595
Oxford Economics	Elizaveta Ross	Iross@oxfordeconomics.com	01865 268 224
Royal Bank of Scotland	Ross Walker	Ross.Walker@rbos.com	020 7085 3670
Scotia Capital	Alan Clarke	alan_clarke@scotiacapital.com	0207 826 5986
Schroders Investment Management	Azad Zangana	Azad.Zangana@schroders.com	020 7658 2671
Societe Generale	Brian Hilliard	Brian.Hilliard@sgcib.com	020 7676 7165
Standard Chartered Bank	Sarah Hewin	Sarah.Hewin@sc.com	020 7885 6251
UBS	Nishit Mittal	Nishit.Mittal@ubs.com	-

HM Treasury contacts

This document can be found in full on our website at:
hm-treasury.gov.uk

If you require this information in another language,
format or have general enquiries about HM Treasury
and its work, contact:

Correspondence and Enquiry Unit
HM Treasury
1 Horse Guards Road
London

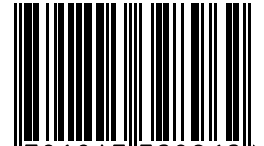
SW1A 2HQ

Tel: 020 7270 4558

Fax: 020 7270 4861

E-mail: public.enquiries@hmtreasury.gov.uk

ISBN 978-1-84532-896-2



9 781845 328962 >